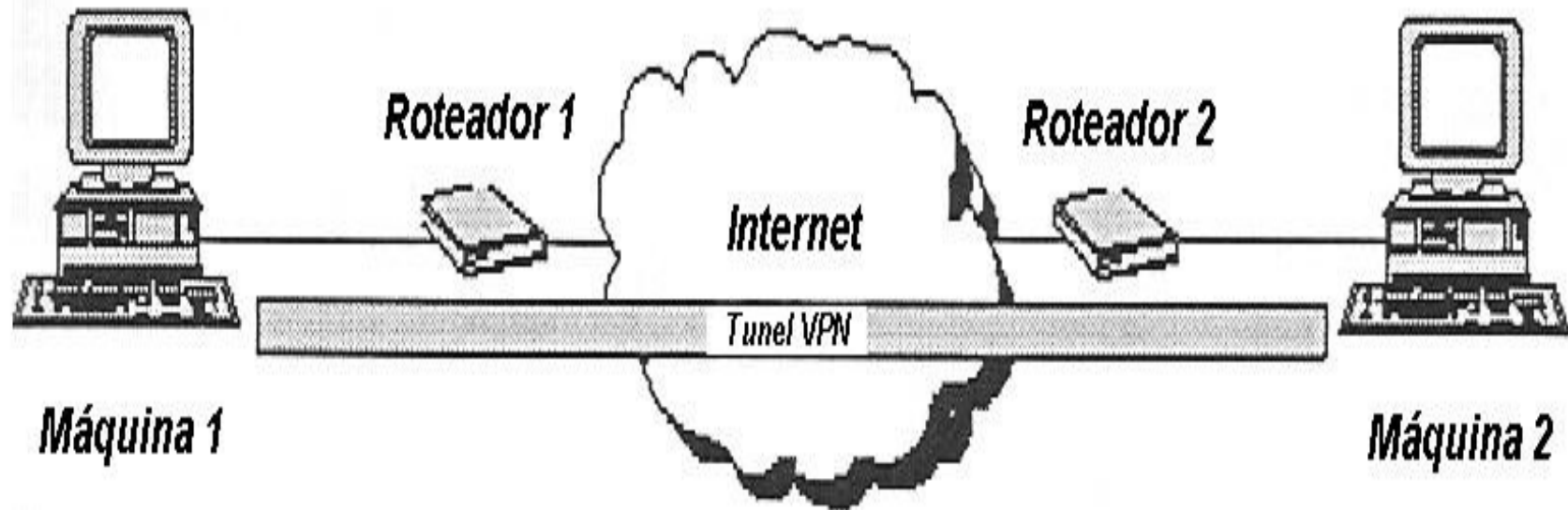


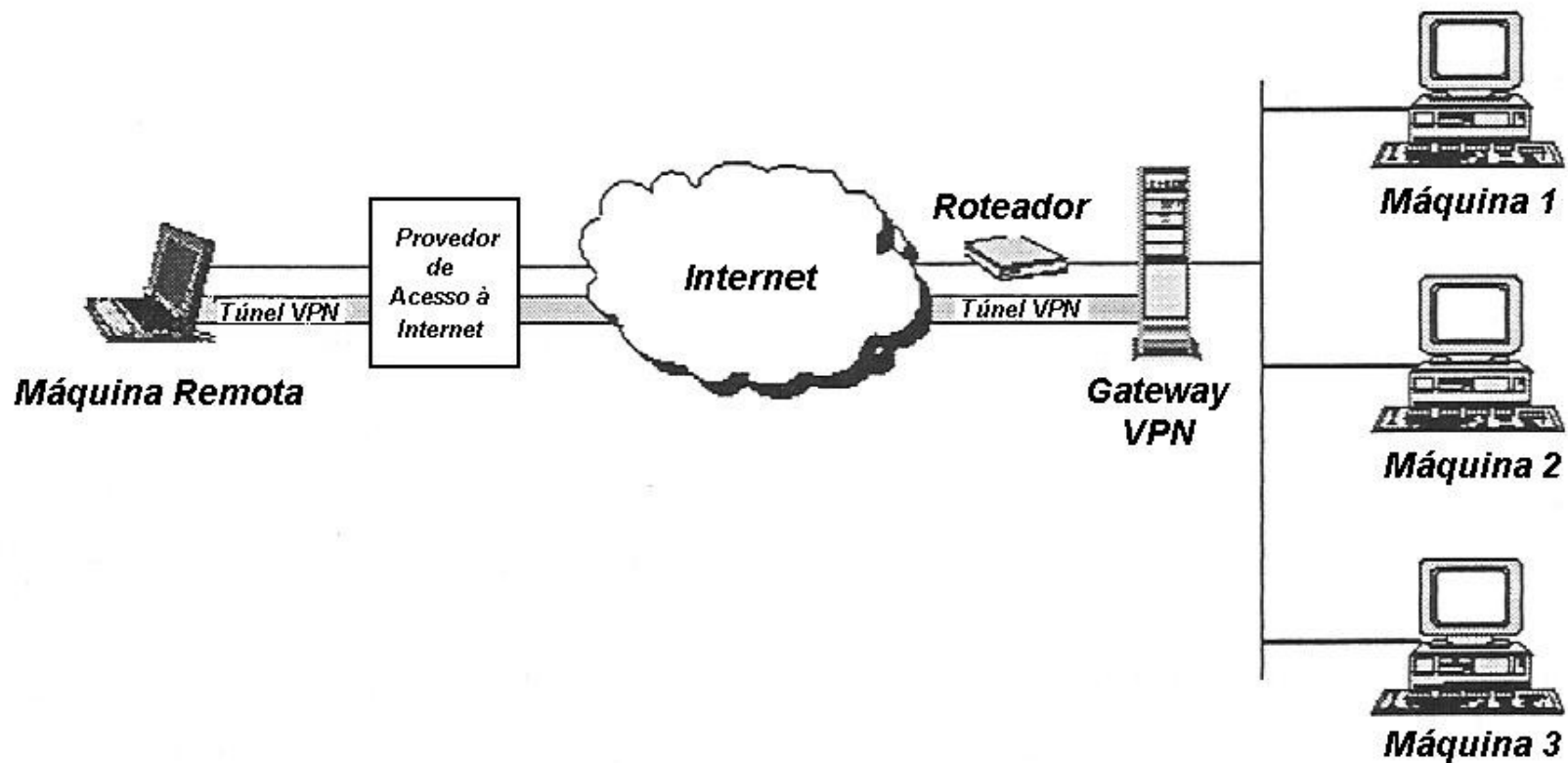
Introdução às Redes Privadas Virtuais

Virtual Private Network
VPN

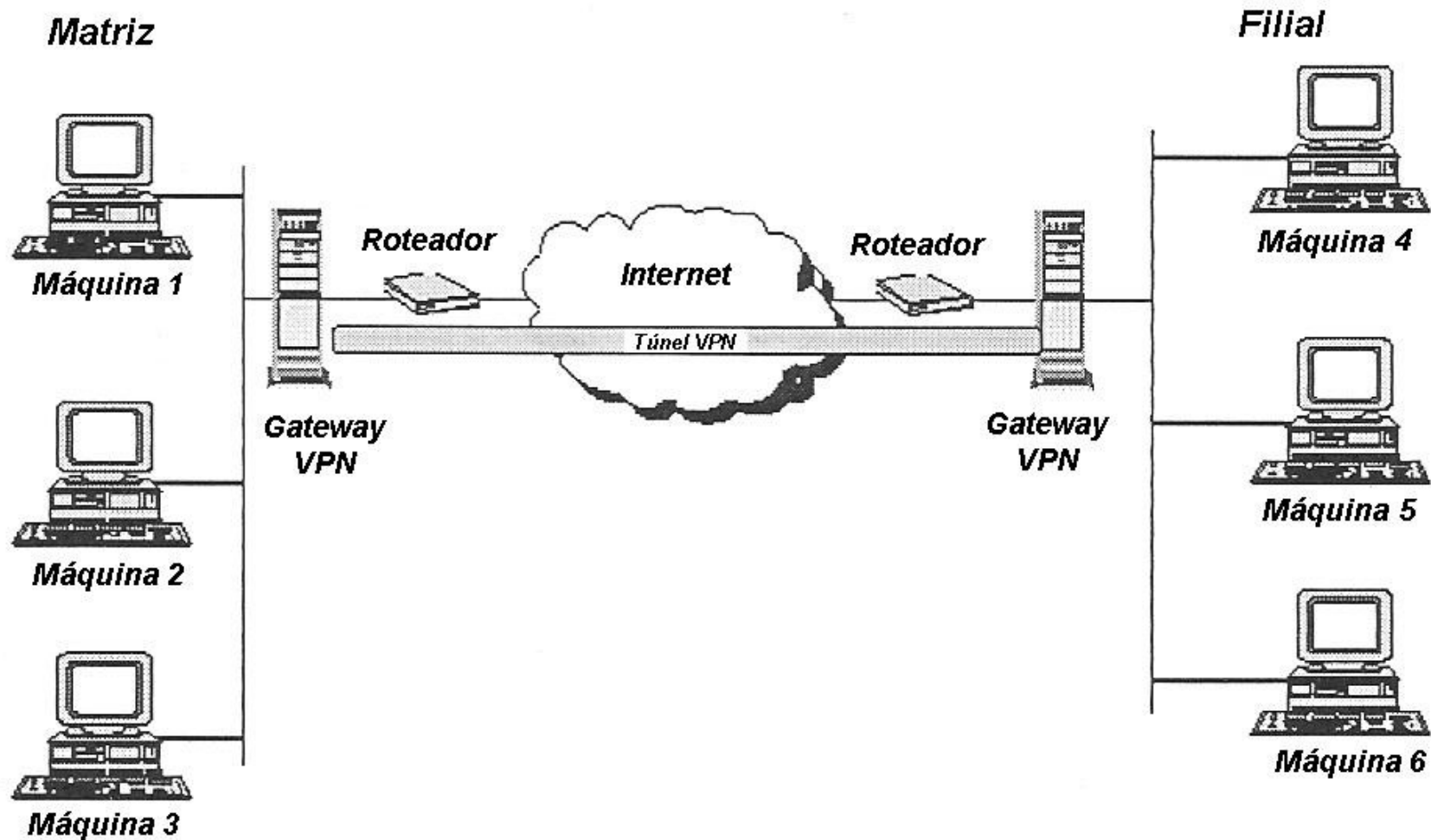
VPN entre duas máquinas



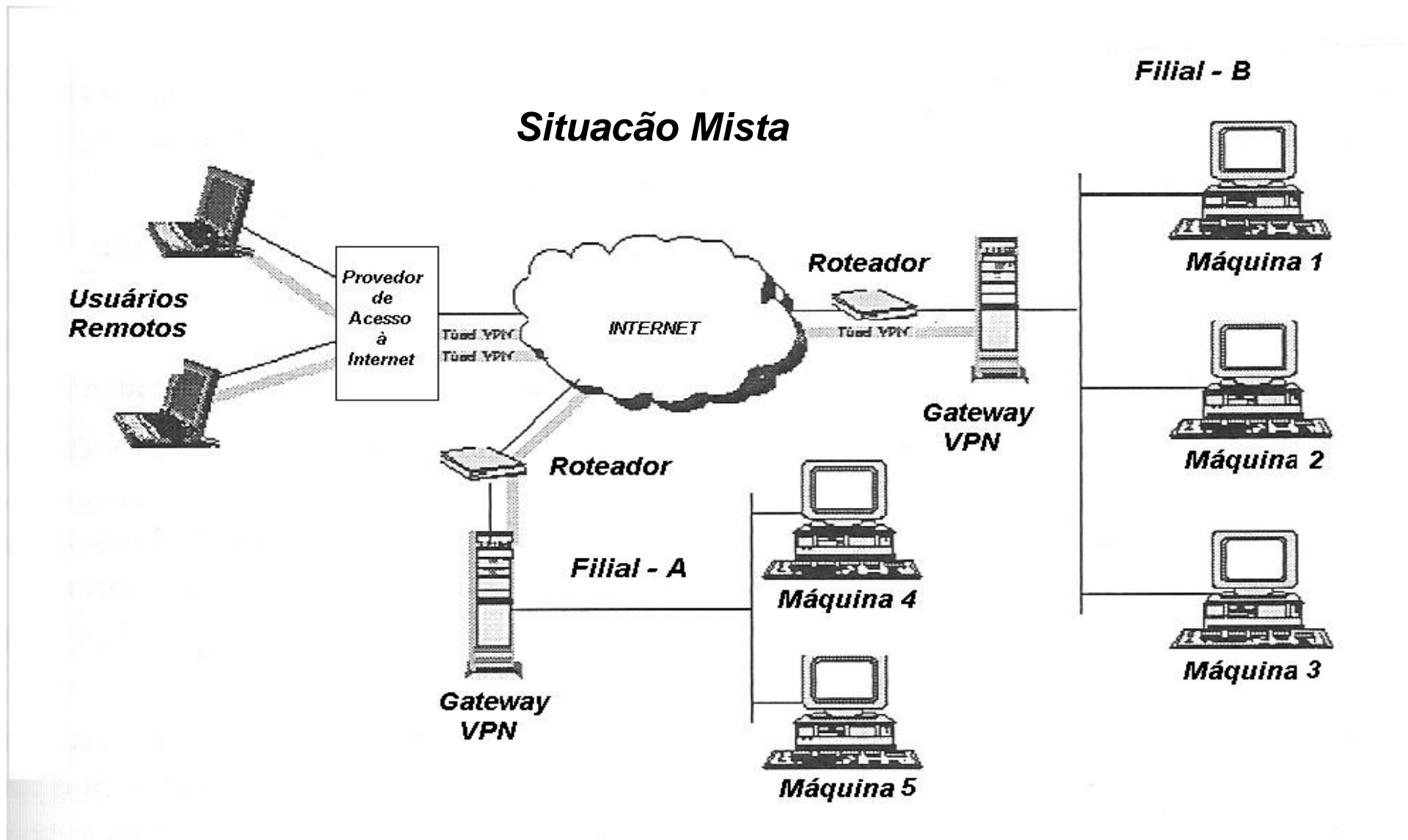
Usuário Remoto e Filial



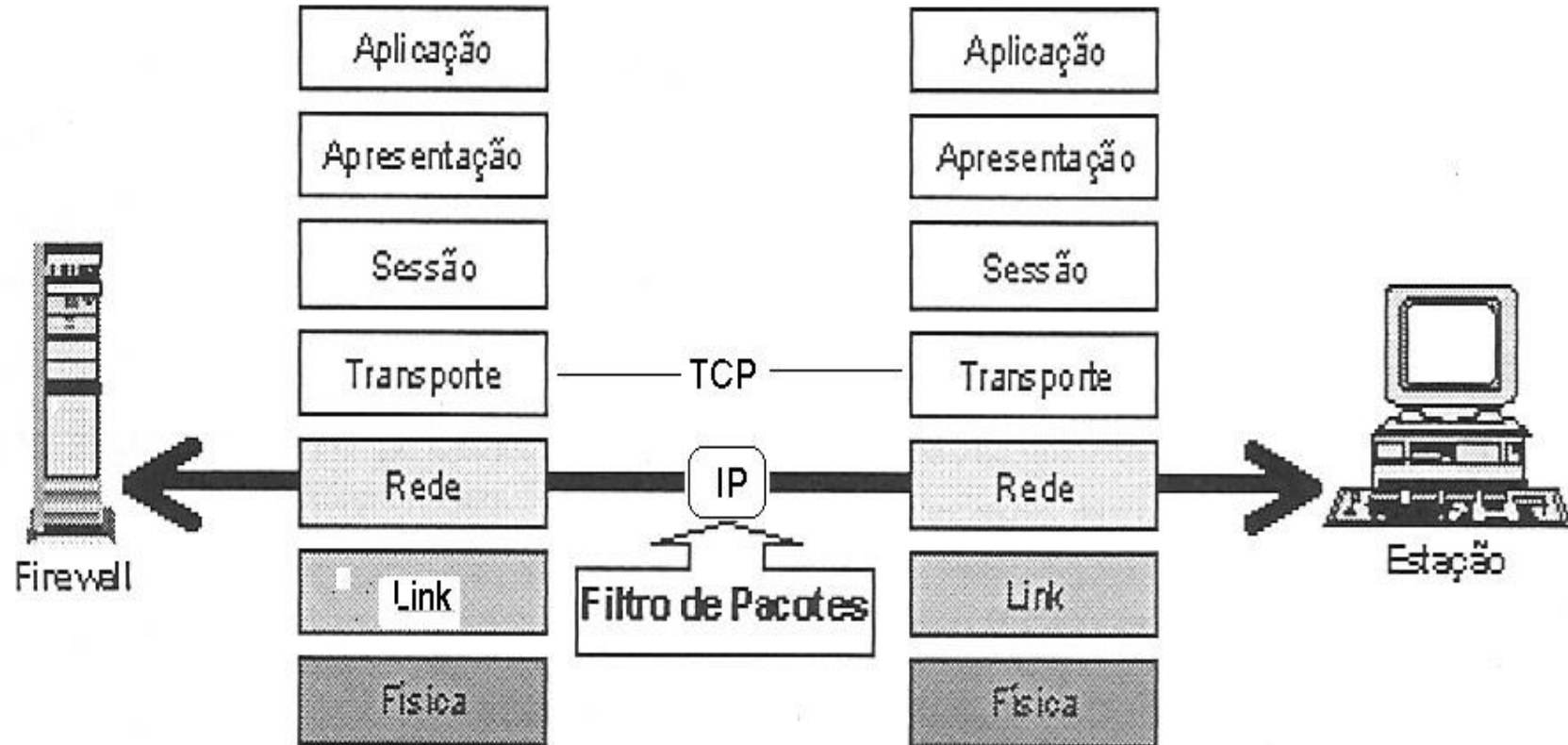
VPN entre Matriz e Filial



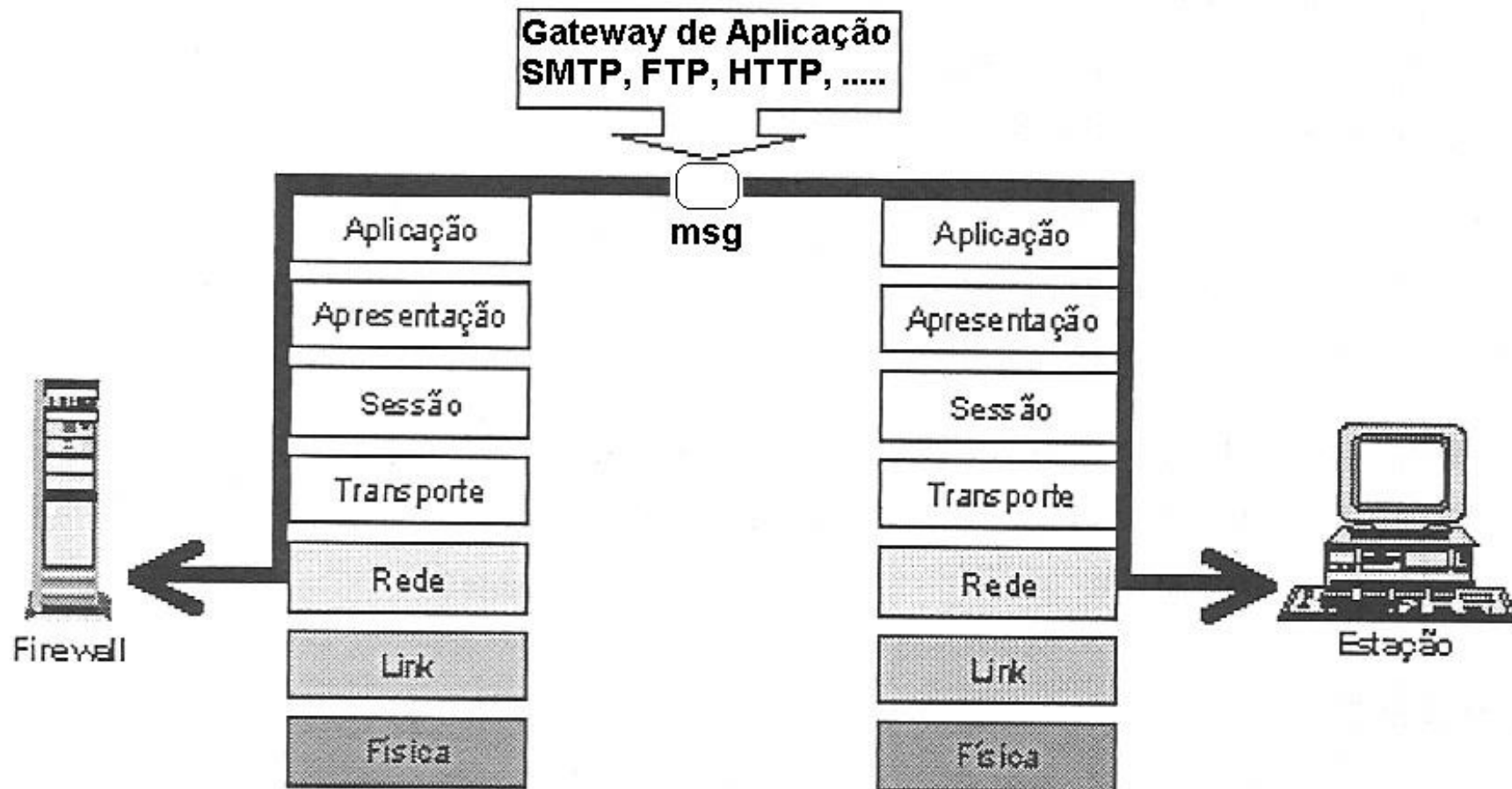
VPN entre duas redes com acesso remoto



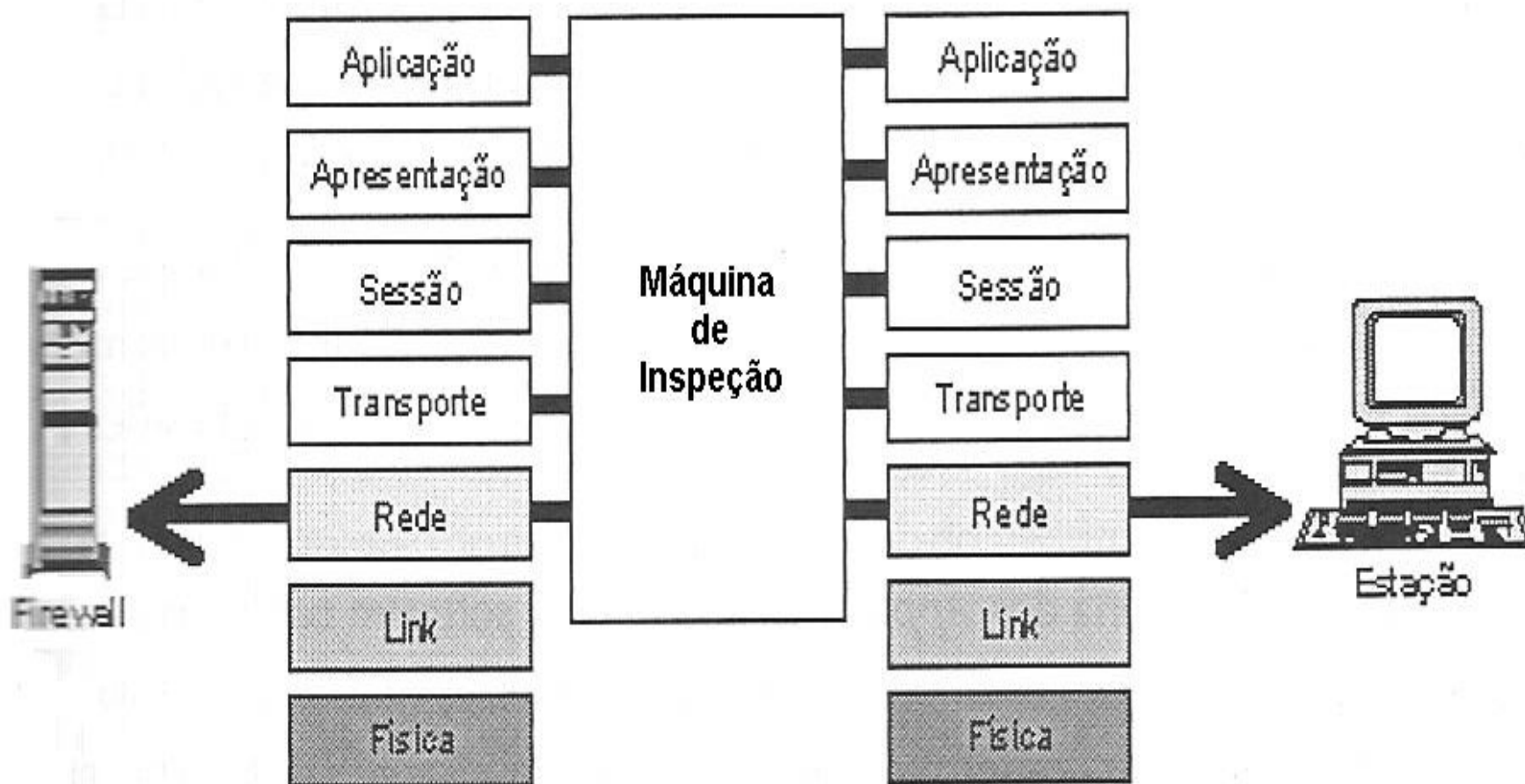
Firewall do Tipo Filtro de Pacotes



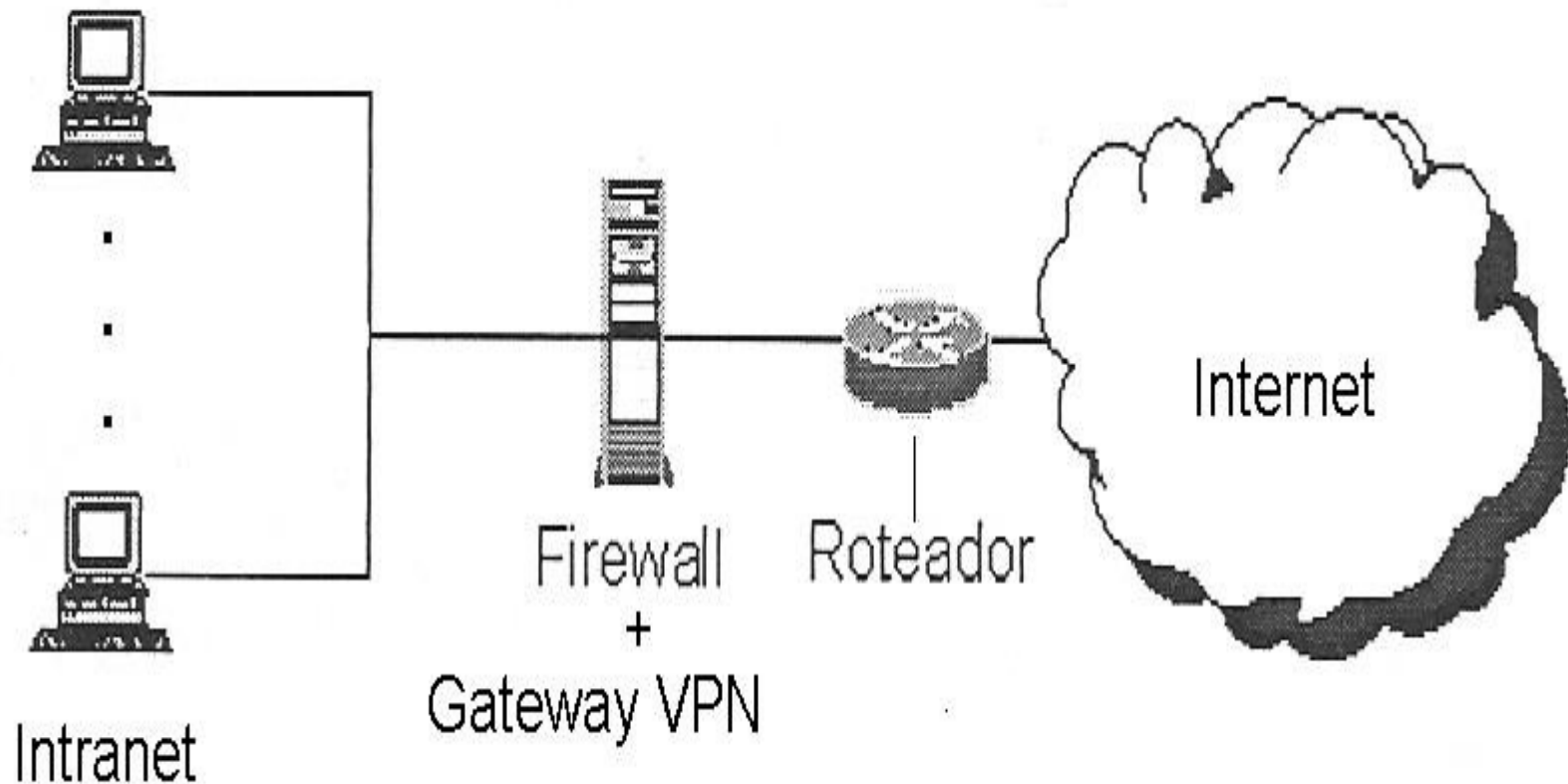
Firewalls do Tipo Gateway de Aplicação



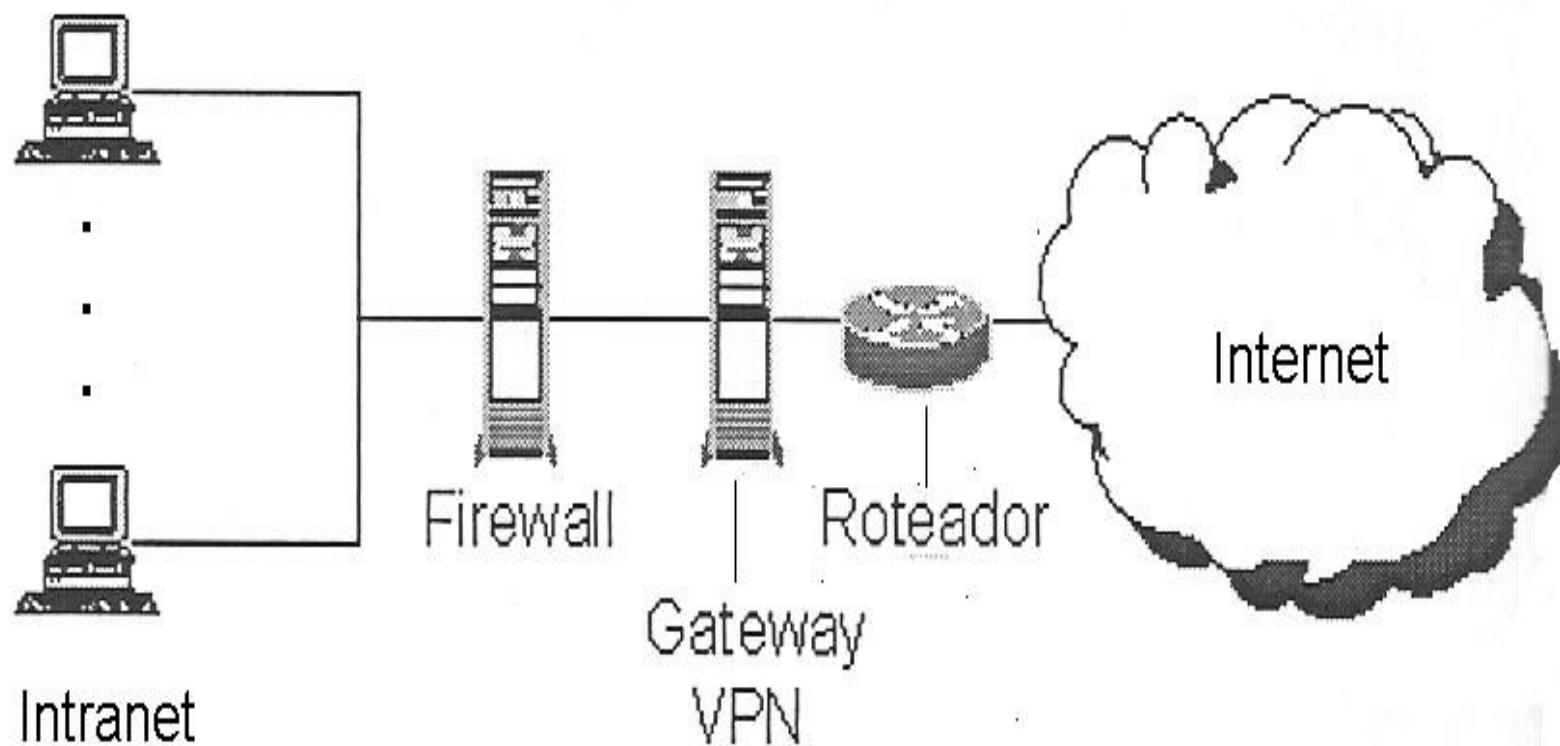
Firewall do Tipo Inspeção de Status



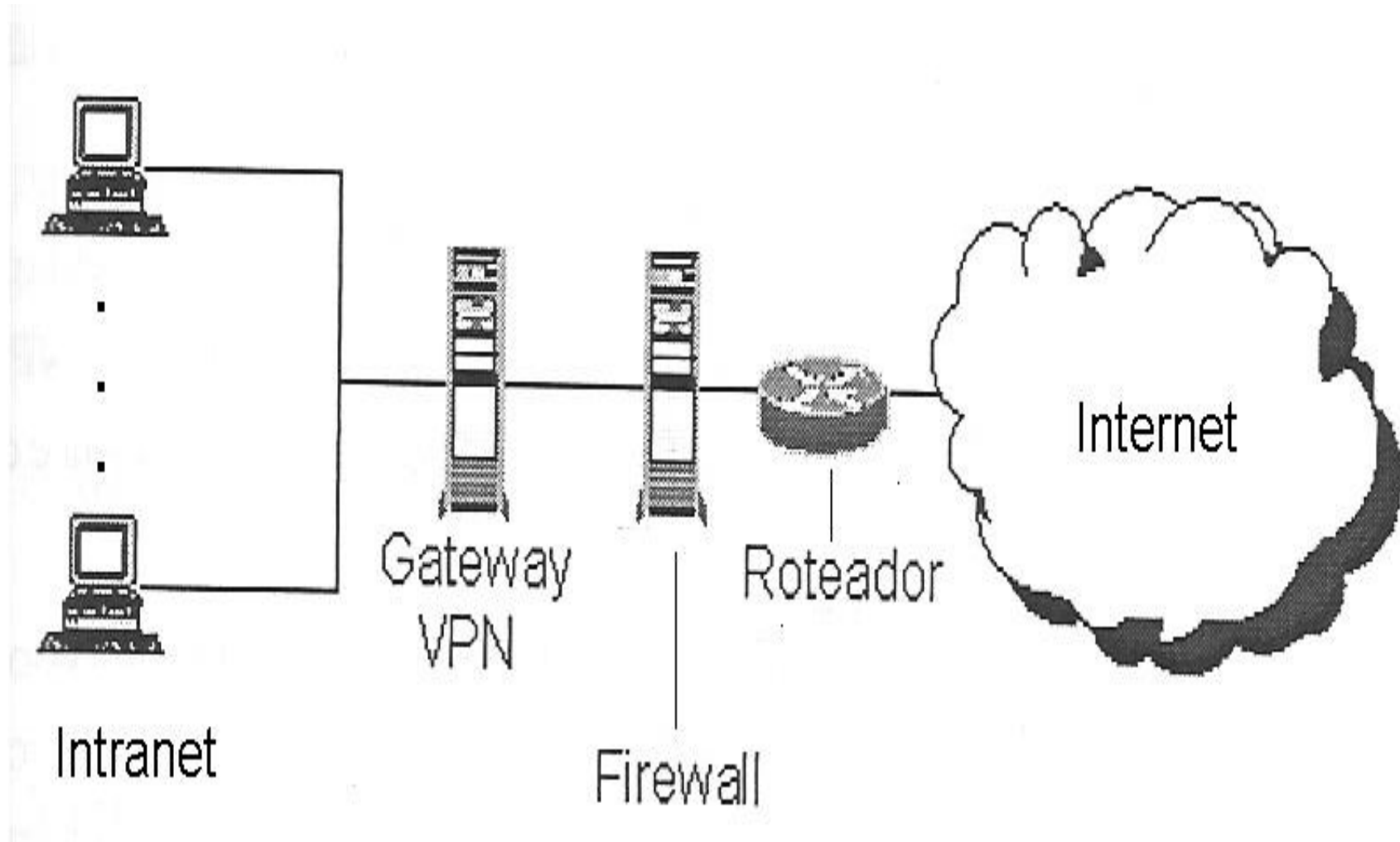
Gateway VPN integrado com Firewall



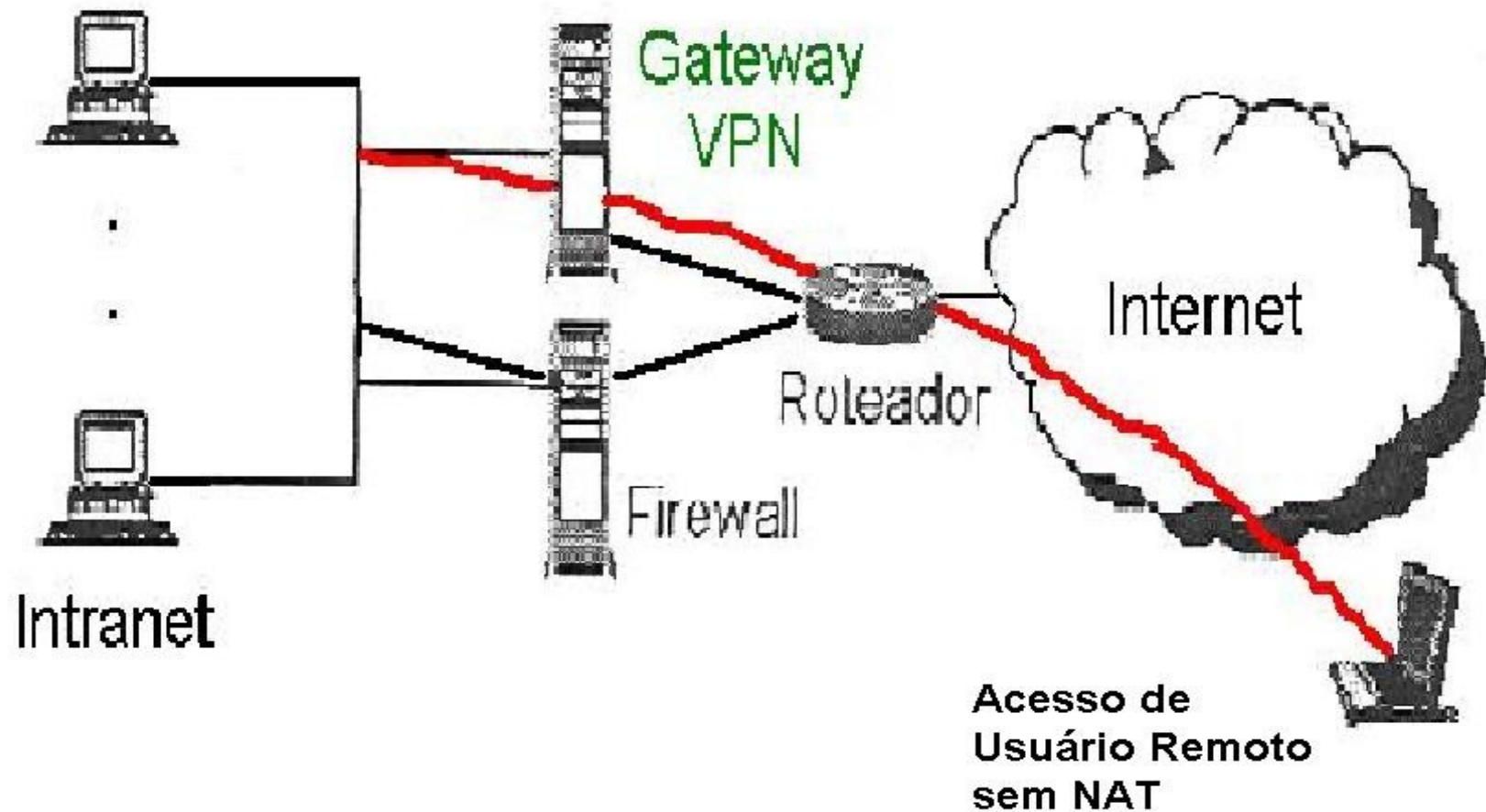
Gateway VPN antes do Firewall



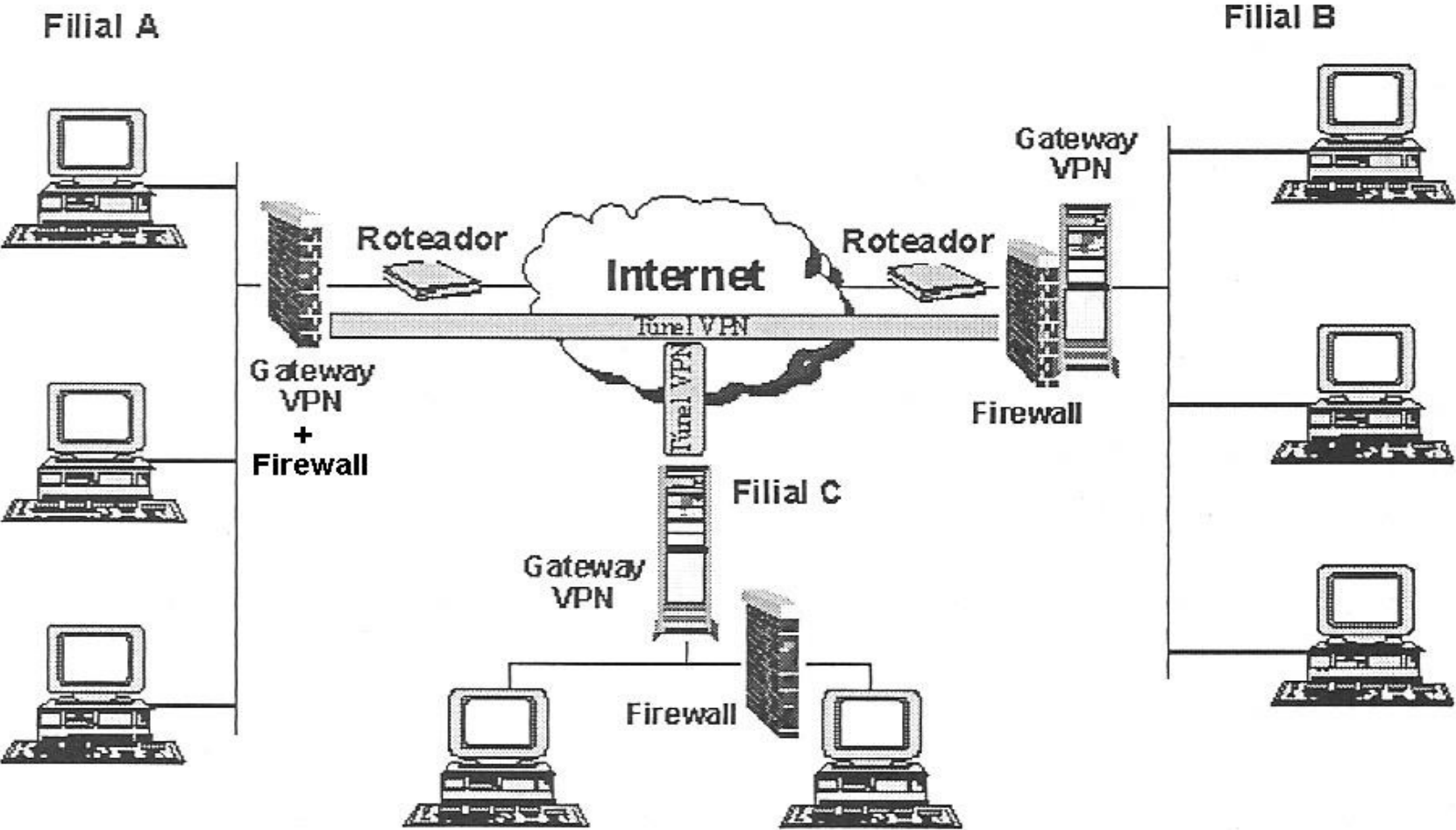
Gateway VPN depois do Firewall



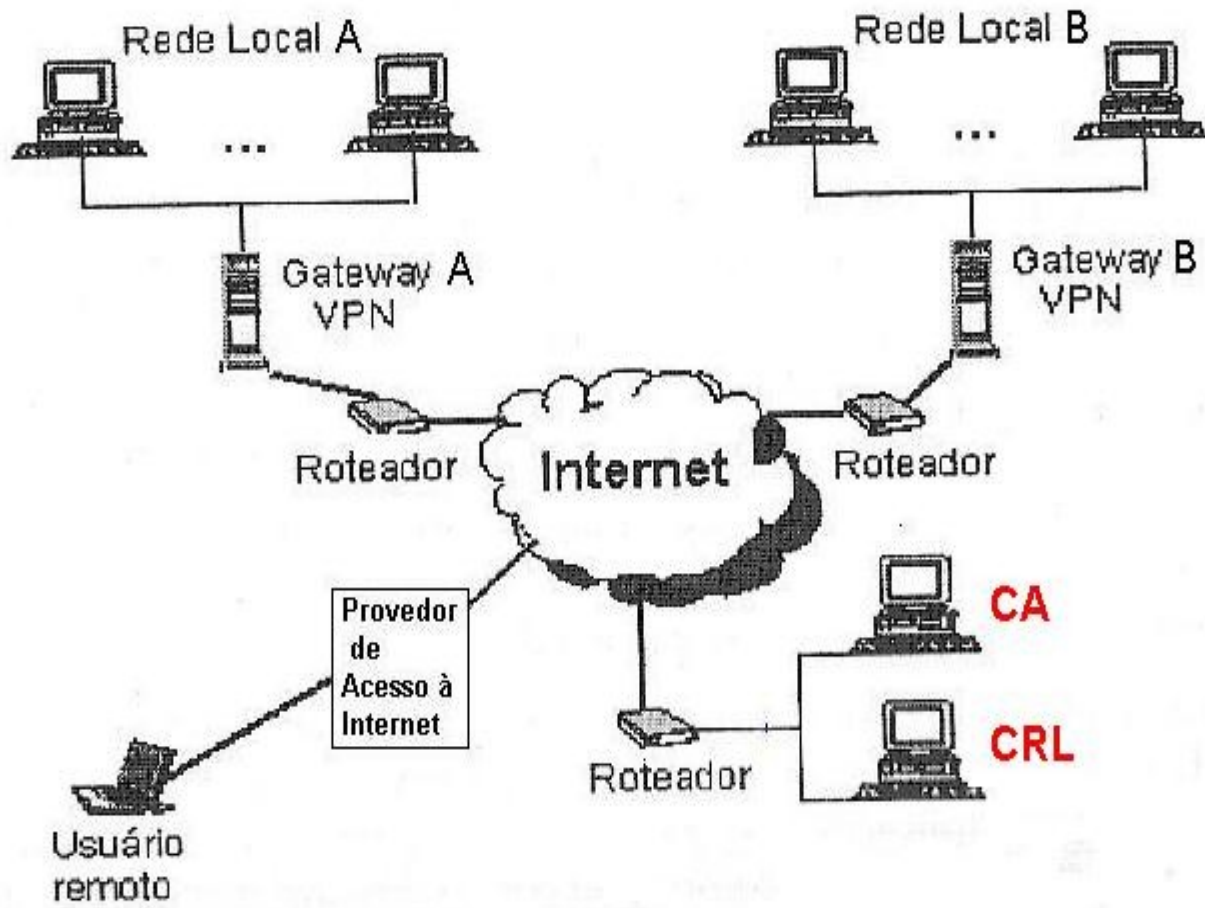
VPN em paralelo com Firewall



VPN entre Filiais com Firewalls



Utilizando PKI em VPN cenário com CA e CRL



Utilizando PKI em VPN

CA : CRL : LDAP

